

Fiskiskapur eftir data

- Innsavnan og gagnnýtsla av data frá skipum

Hjálmar Hátún
og fleiri...

Samstarv

- Fakið “havfrøði” hevur sín uppruna í tørvinum at stuðla fiskivinnuni
- Latið okkum saman minka um óneyðugu “skotgrøvina” millum vinnu og vísindi (Havstovuna)

– Combined CATSAT with your fishing knowledge

Combined with your fishing knowledge, you will use CATSAT maps to navigate directly to the closest productive and potential areas.

- › Optimize your fishing campaign by quickly identifying favorable fishing areas
- › Increase your efficiency by reducing the operational costs and the environmental impact
- › Understand the ocean dynamics and take the maximum advantage of the information and tools provided by CATSAT

products

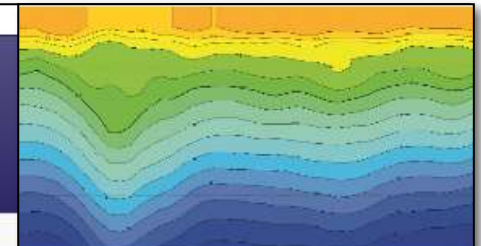
BETTER

ishing
hance.
isions
n



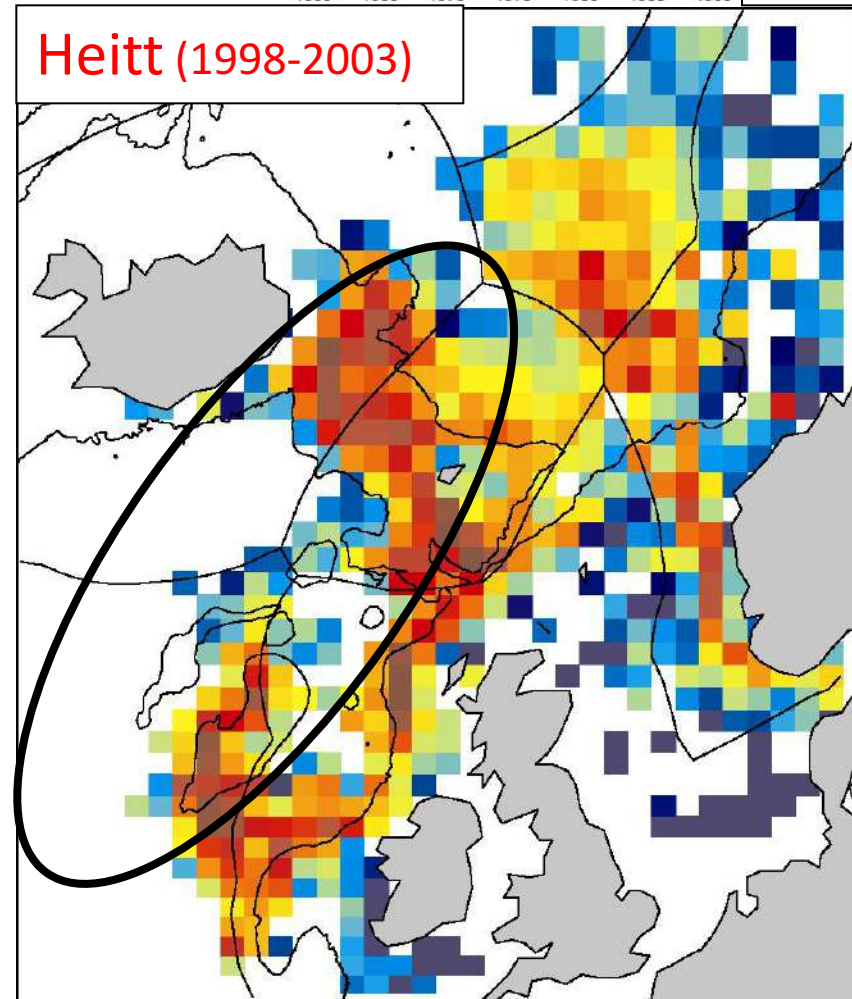
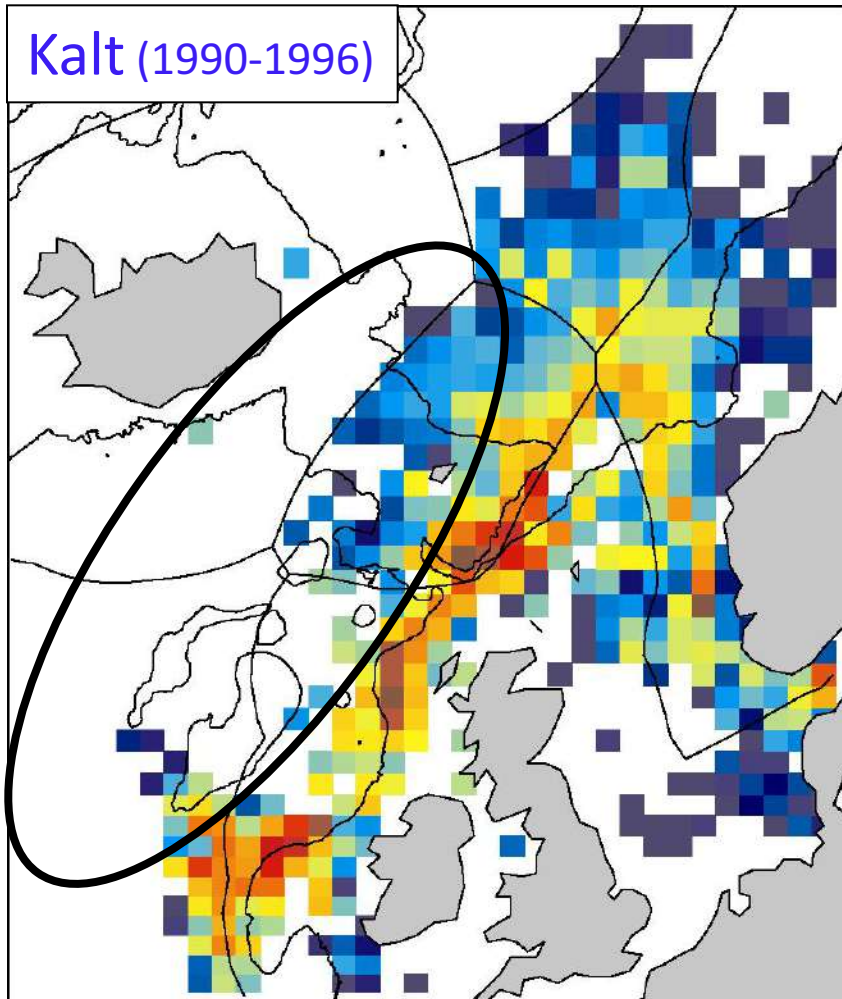
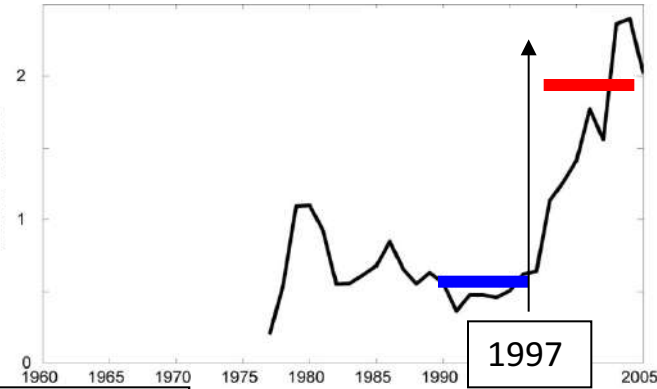
– The CATSAT advantage

- › Highest definition sea temperature maps on the market
- › Sub-surface temperature **down to sea bottom** and **thermocline help to identify vertical fronts** which can be a physical barrier for some fish species
- › Climatology **based on 20 years of data** designed for use with the gradient tool to easily identify how the temperature is evolving.



Havumhvørvi og uppsjóvafiskur

(Dømi: Svartkjaftur, Veiða – allar tjóðir, alt árið)



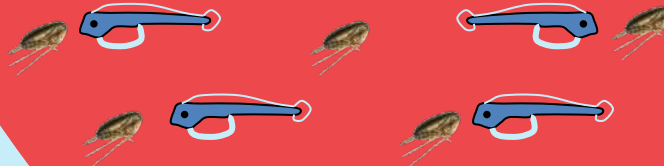
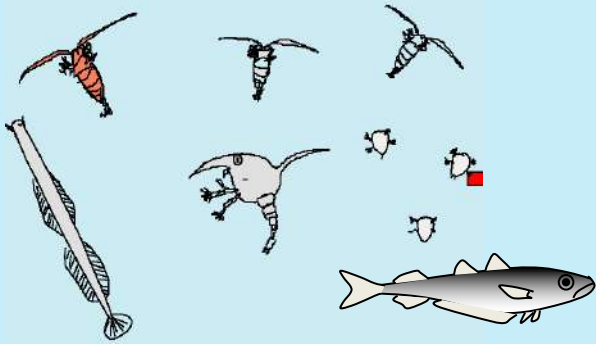
Svartkjaftur gýtir bert í sjógvi við ávísam hita og saltinnihaldi

Er það hitin?

Ella ymisk slög av æti?

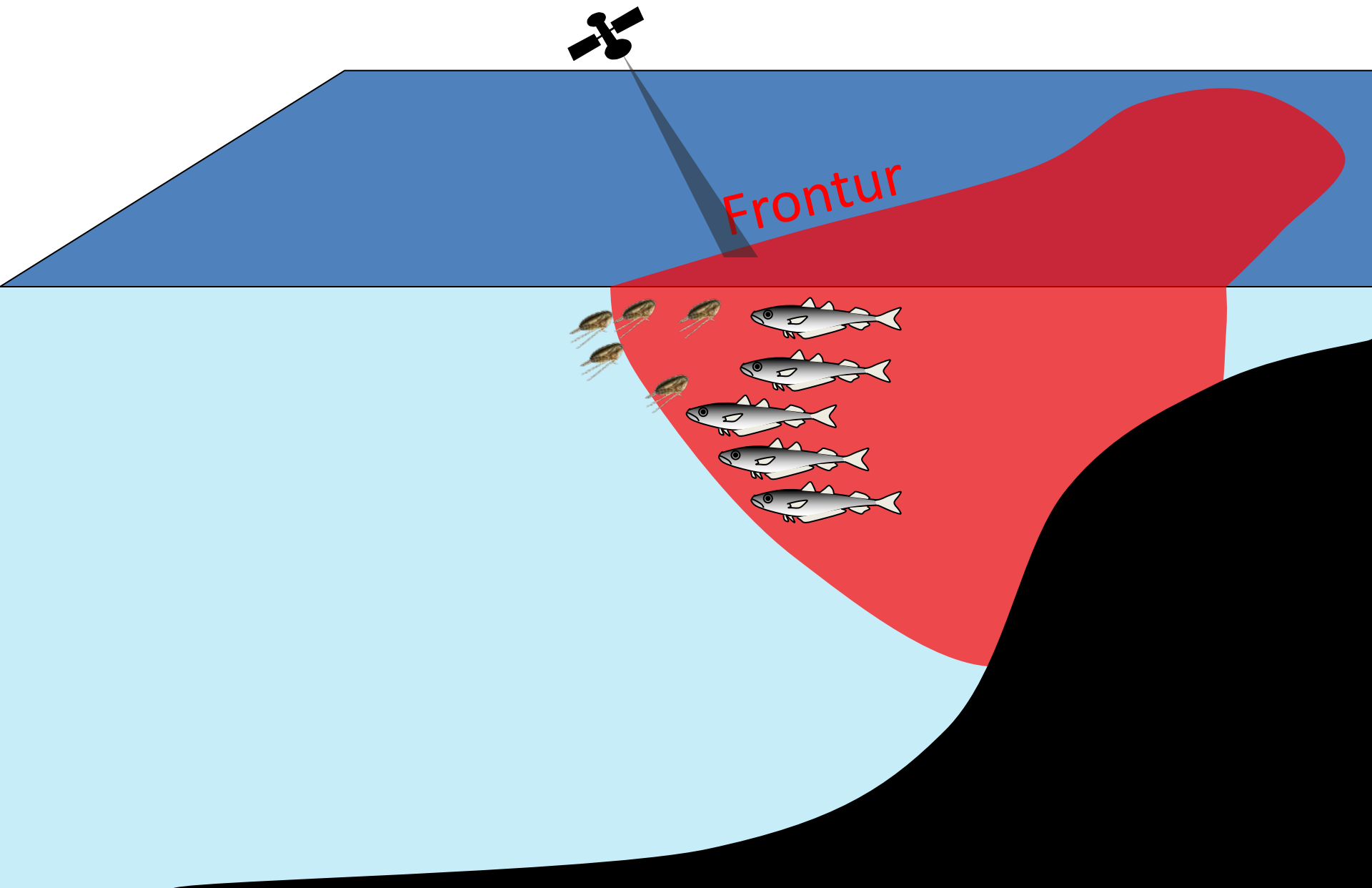
Er það saltinnihaldið?

Heitur og saltur

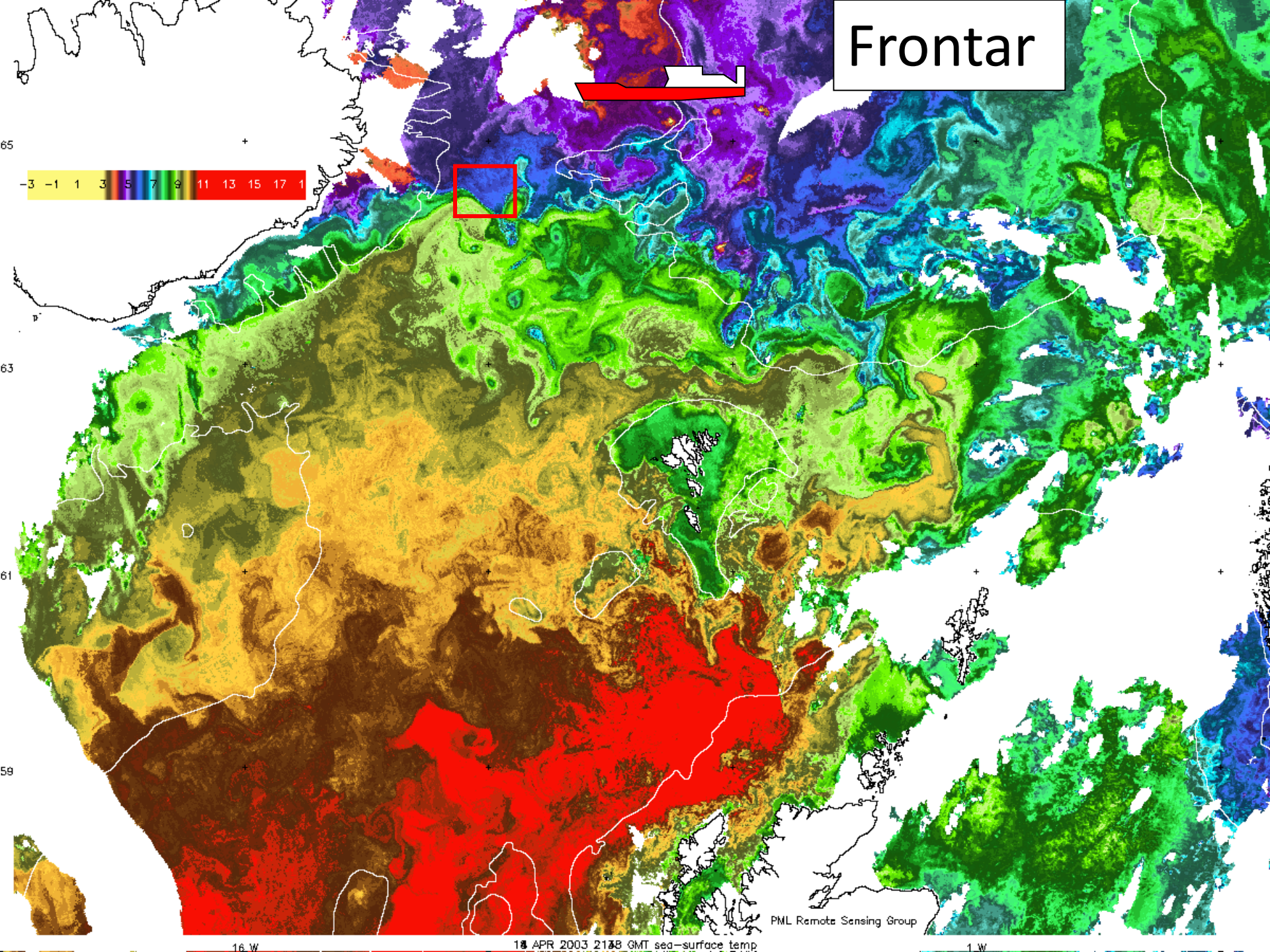


Írski
landgrunnurinn

Savnast við frontar



Frontar



Søgugongd

Vikmar



Finnur Fríði

Sjókovin

Hvat so?

Svívarar

Vónadag 1

Vónadag 2

EU umsókn

2008

2009

2010

2014

Tíð

2019

2020

Nú



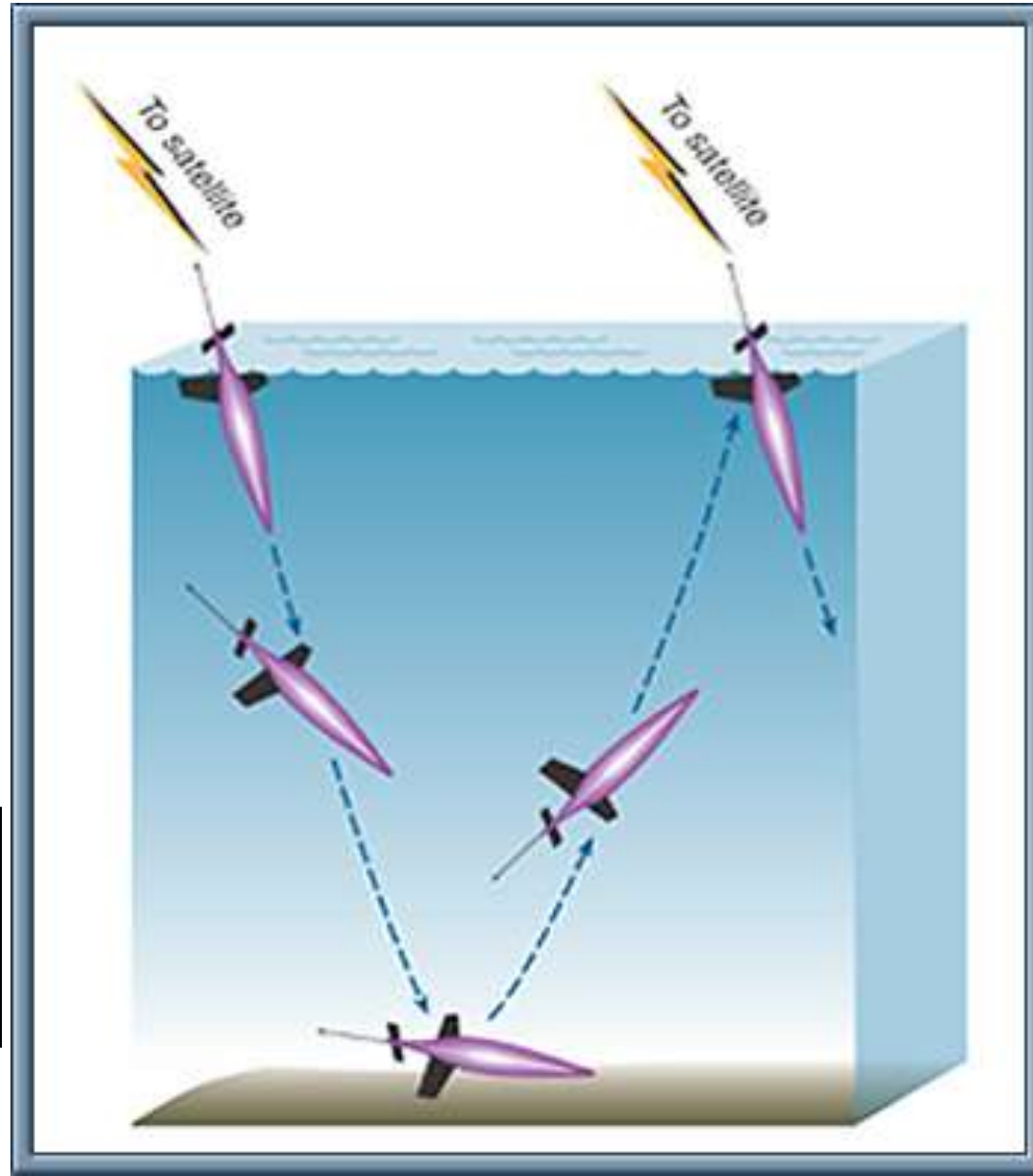
Havsvívarar

(Samstarv við
University of Washington)

2008-2010

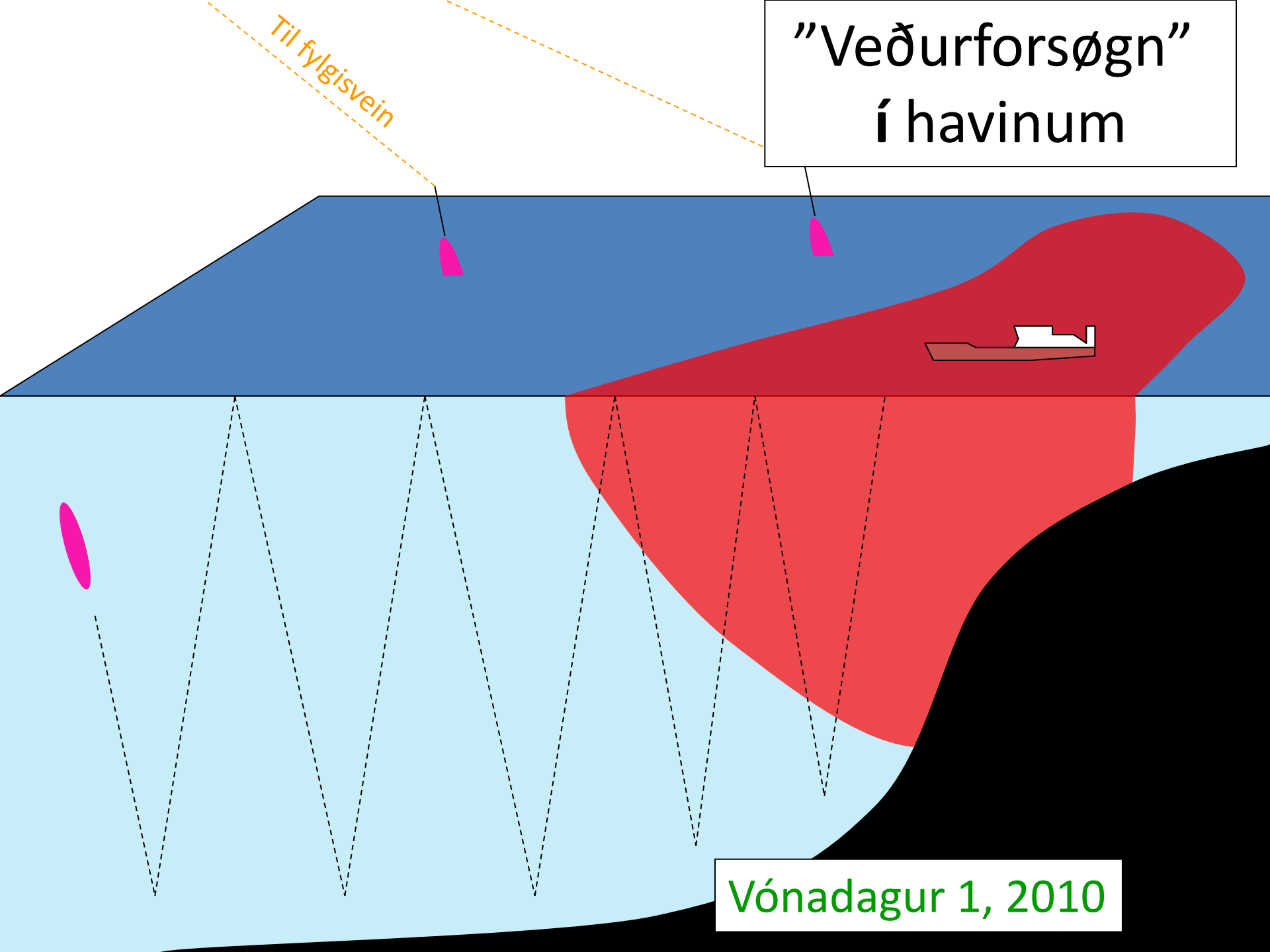


Máta:
Hita, saltinnihald, oksygen
gróður og streymar

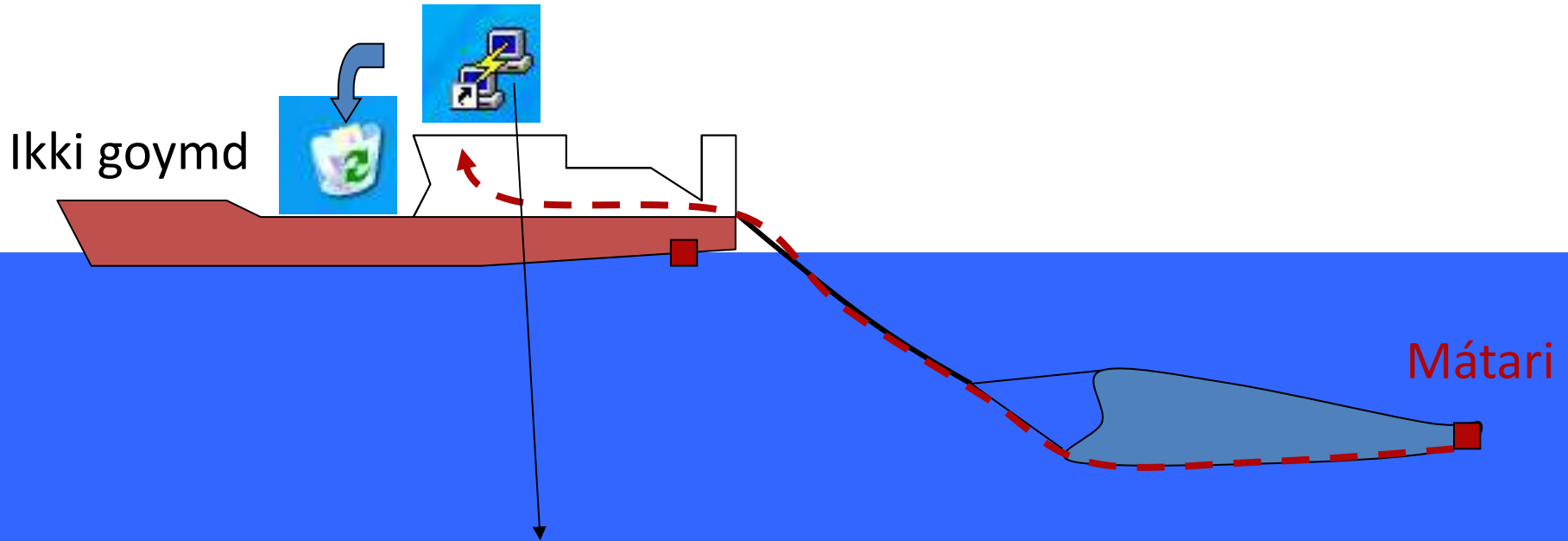


"Veðurforsögn" í havinum

Til fylgisvein



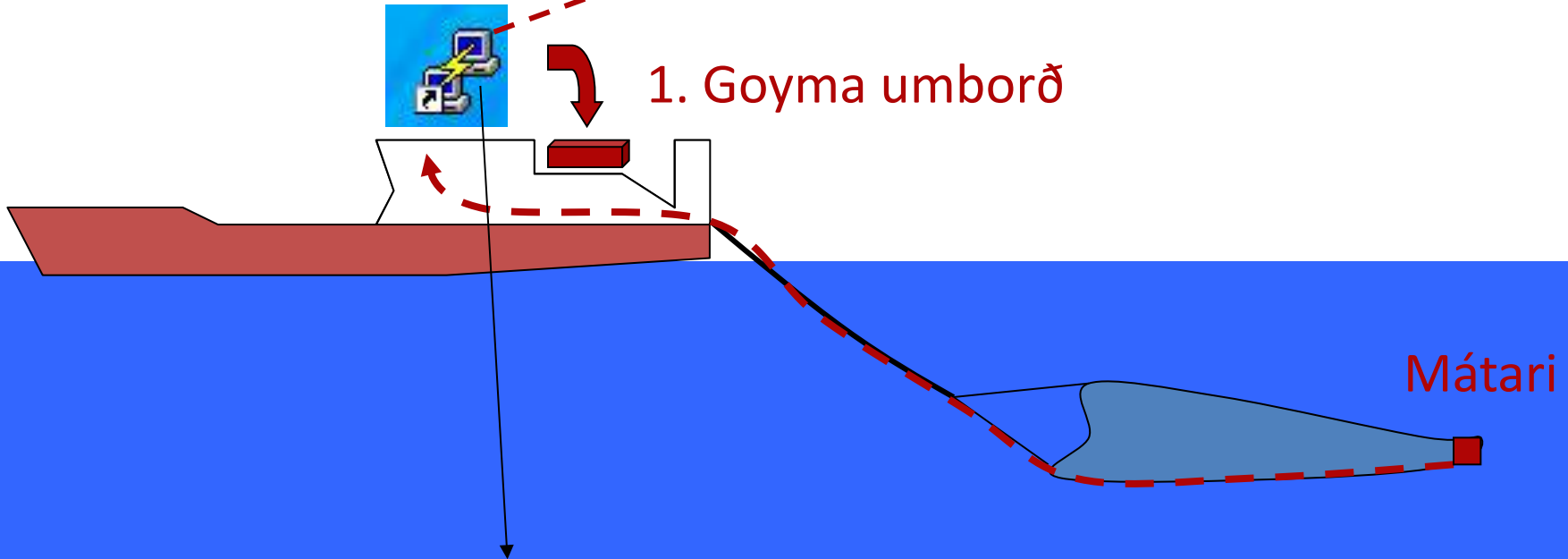
Vónadagur 1, 2010



Breidd	No	Longd	Kl.	Dato	Hiti	Dýpi			
6149.645		47.776	08:34:53	13.06.2009	8.56	249.13	248.81	250.38	
6149.639		47.778	08:34:58	13.06.2009	8.56	249.19	250.13	250.06	
6149.634		47.78	08:35:03	13.06.2009	8.56	249.19	250.06	250.06	
6149.629		47.784	08:35:08	13.06.2009	8.56	247.5	248.94	251.56	
6149.624		47.786	08:35:13	13.06.2009	8.56	249.81	250.19	246	
6149.619		47.788	08:35:18	13.06.2009	8.38	250.06	249.13	249.19	
6149.614		47.791	08:35:23	13.06.2009	8.38	248.19	249.81	250.13	
6149.609		47.793	08:35:28	13.06.2009	8.38	250.5	249	245.44	
6149.604		47.795	08:35:33	13.06.2009	8.38	248.5	249	254	
6149.599		47.798	08:35:38	13.06.2009	8.38	250	249.75	254.63	
6149.594		47.801	08:35:43	13.06.2009	8.38	250.5	251	254.63	

2. Til fylgisvein

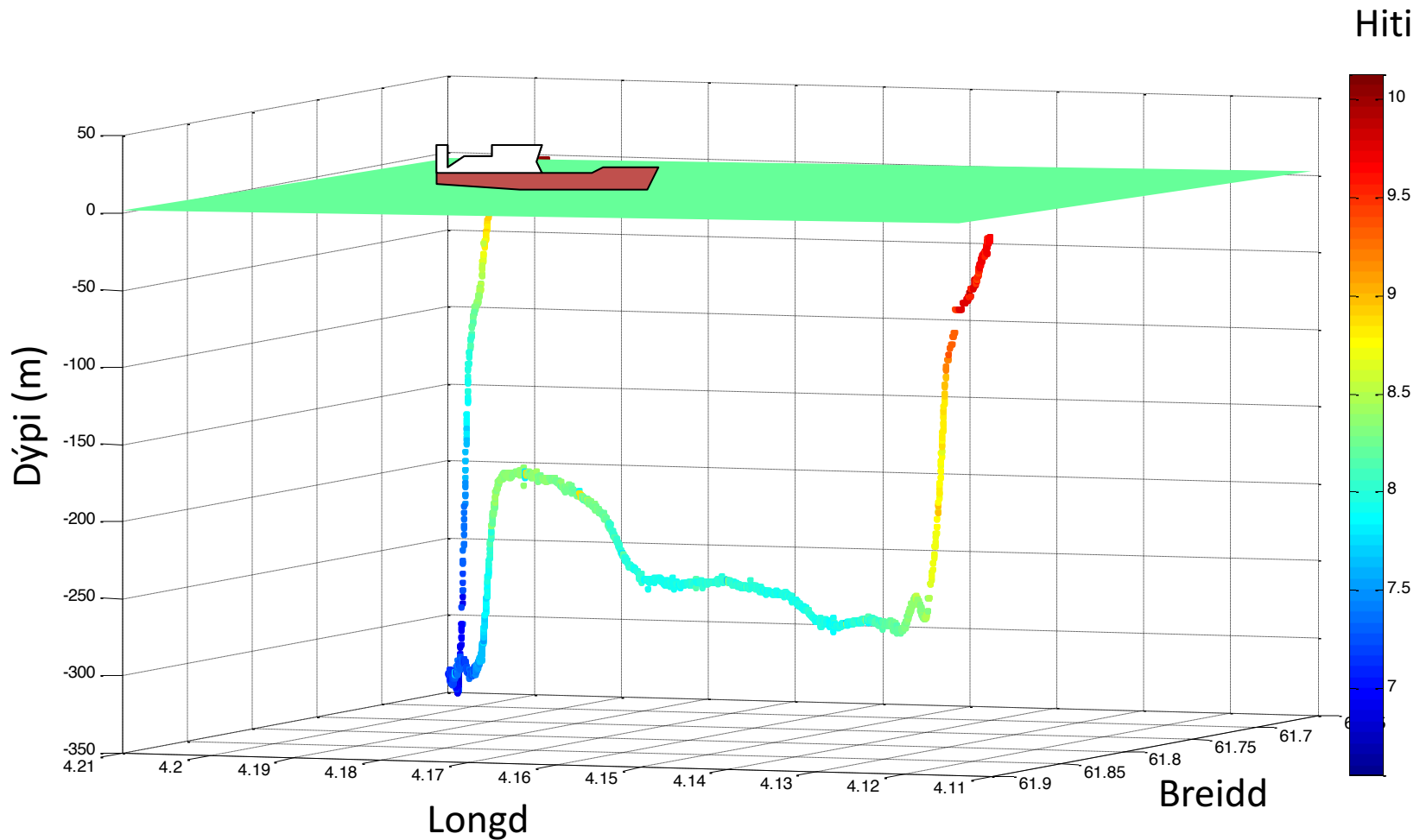
1. Goyma umborð



Breidd	No	Longd	Kl.	Dato	Hiti	Dýpi			
6149.645		47.776	08:34:53	13.06.2009	8.56	249.13	248.81	250.38	
6149.639		47.778	08:34:58	13.06.2009	8.56	249.19	250.13	250.06	
6149.634		47.78	08:35:03	13.06.2009	8.56	249.19	250.06	250.06	
6149.629		47.784	08:35:08	13.06.2009	8.56	247.5	248.94	251.56	
6149.624		47.786	08:35:13	13.06.2009	8.56	249.81	250.19	246	
6149.619		47.788	08:35:18	13.06.2009	8.38	250.06	249.13	249.19	
6149.614		47.791	08:35:23	13.06.2009	8.38	248.19	249.81	250.13	
6149.609		47.793	08:35:28	13.06.2009	8.38	250.5	249	245.44	
6149.604		47.795	08:35:33	13.06.2009	8.38	248.5	249	254	
6149.599		47.798	08:35:38	13.06.2009	8.38	250	249.75	254.63	
6149.594		47.801	08:35:43	13.06.2009	8.38	250.5	251	254.63	

Hiti eftir einum "tóvi" hjá Finni Fríða

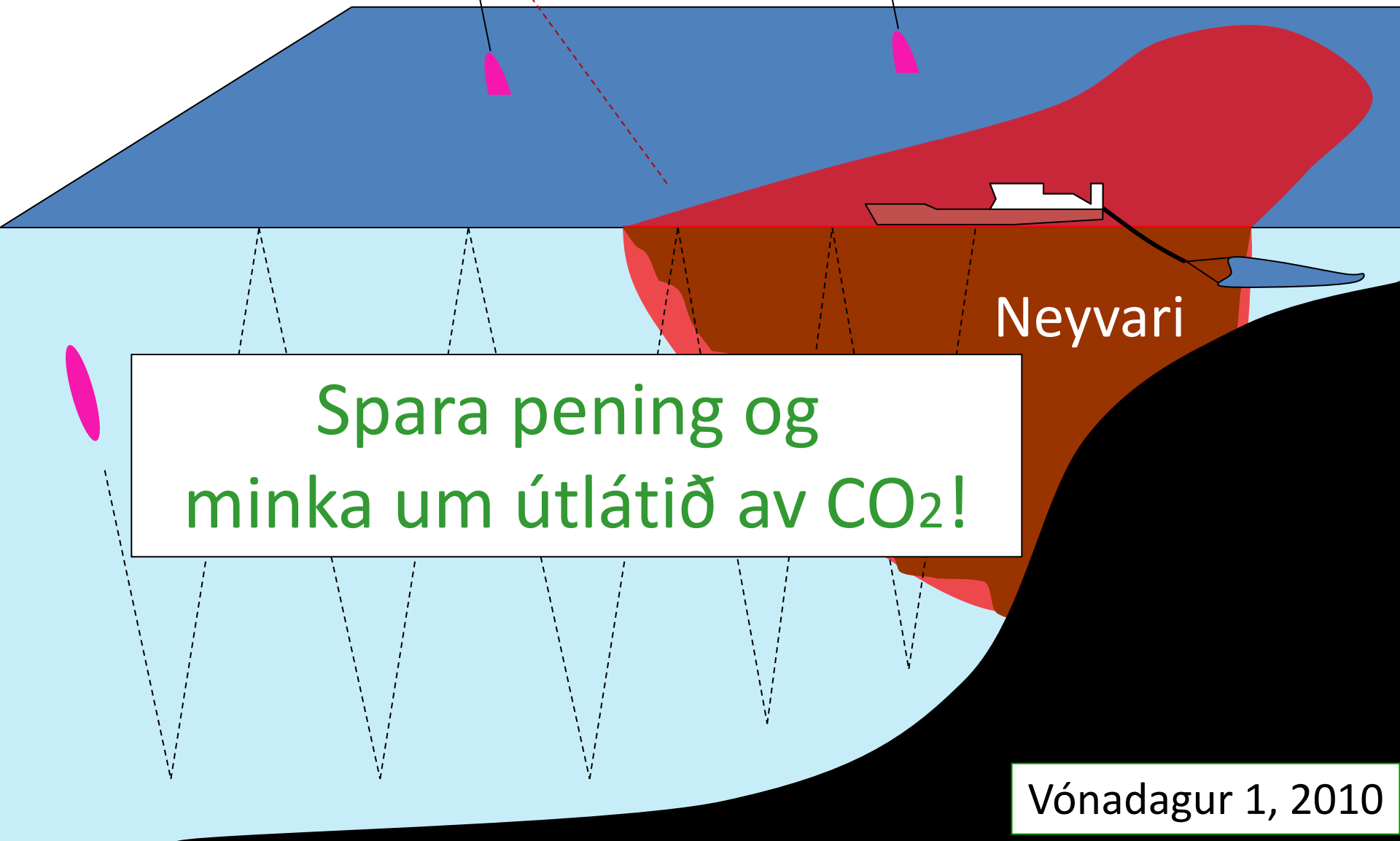
(data frá Fróða Skúvadal)



“Veðurforsögn” í havinum

Til fylgisvein

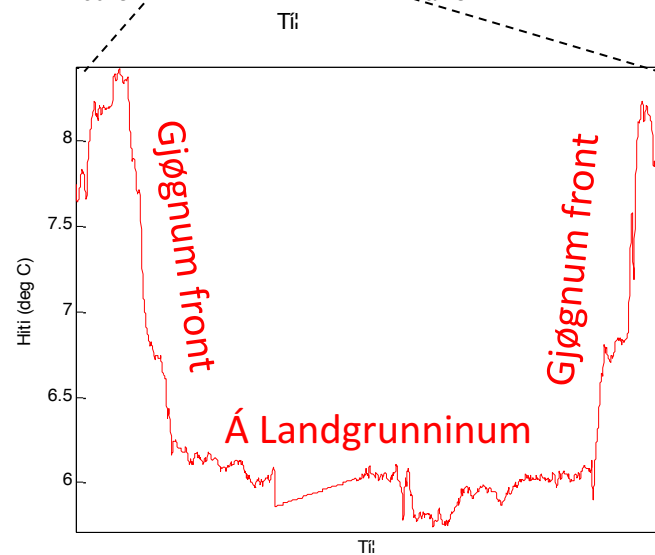
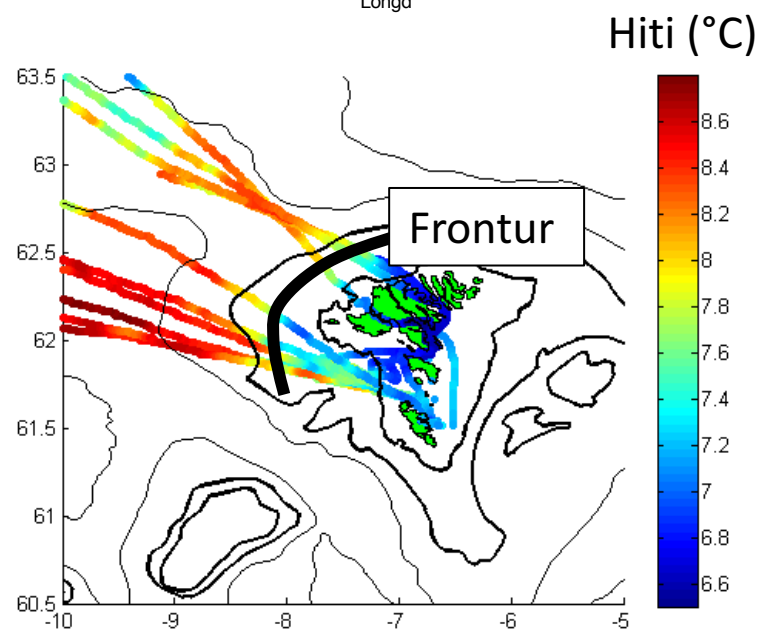
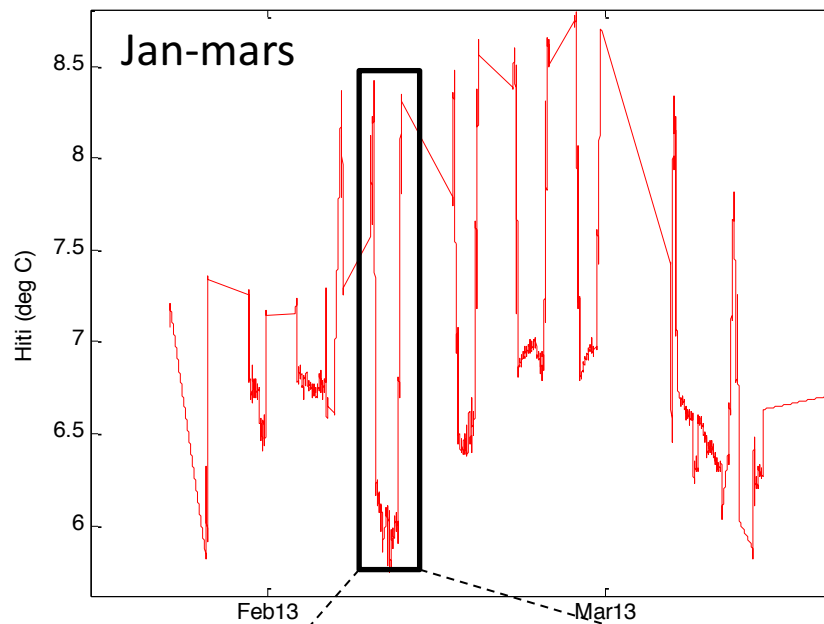
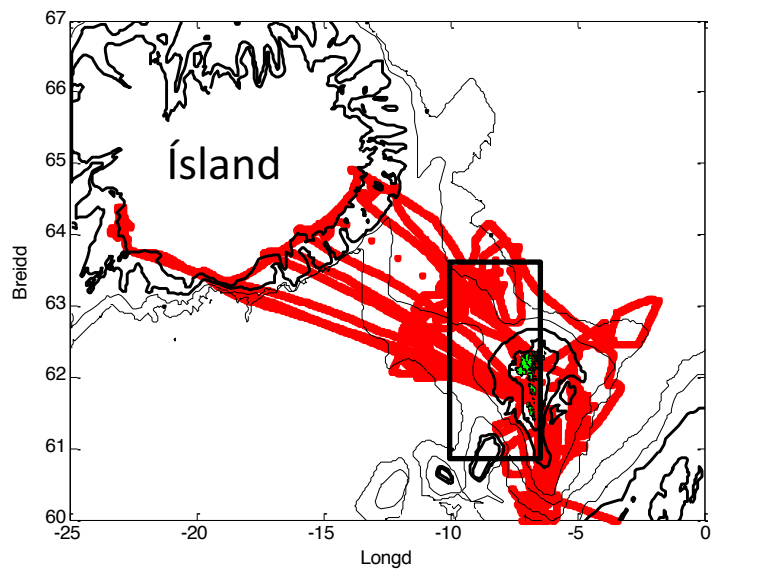
Til fylgisvein



Spara pening og
minka um útlátið av CO₂!

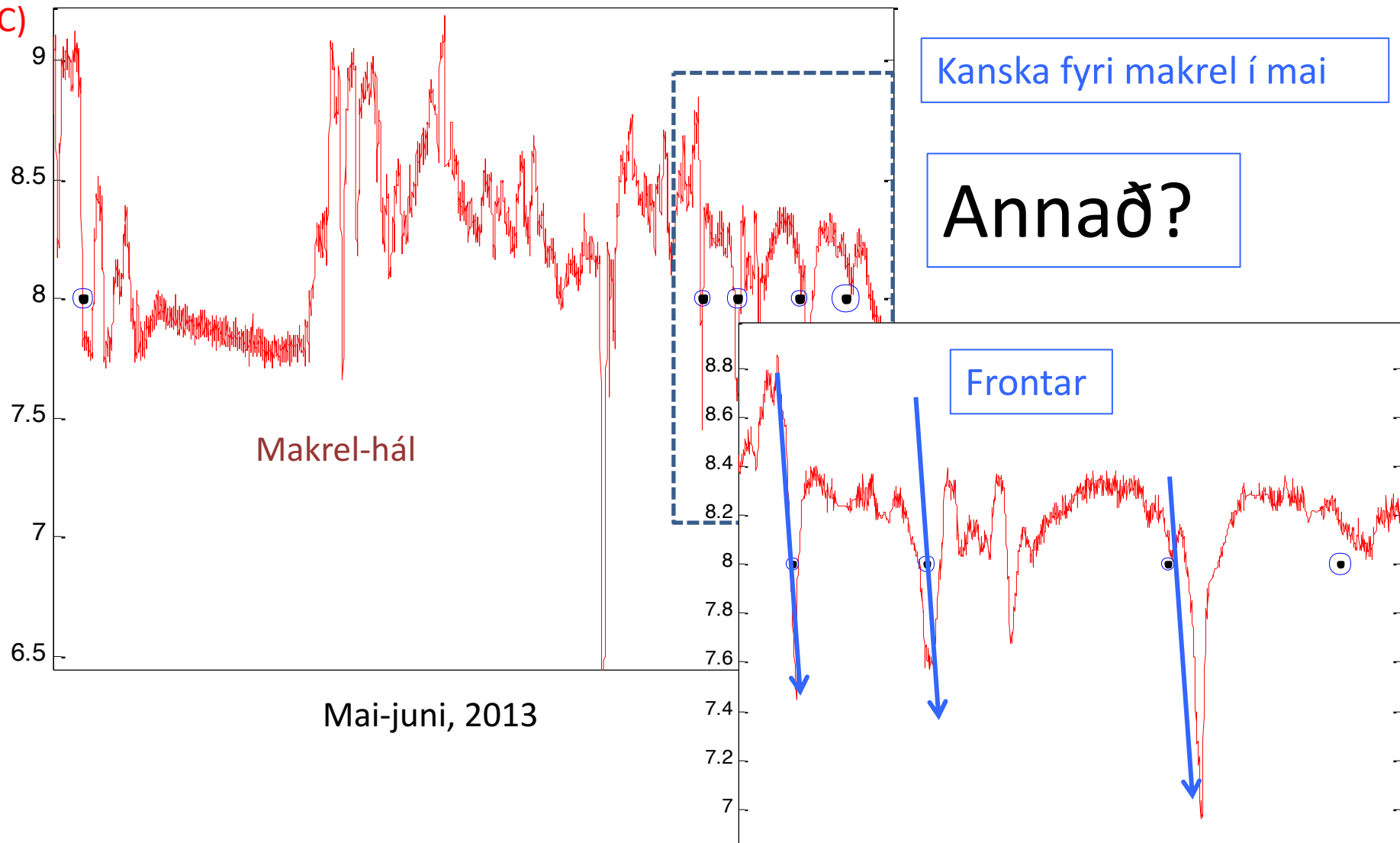
Neyvari

Vónadagur 1, 2010

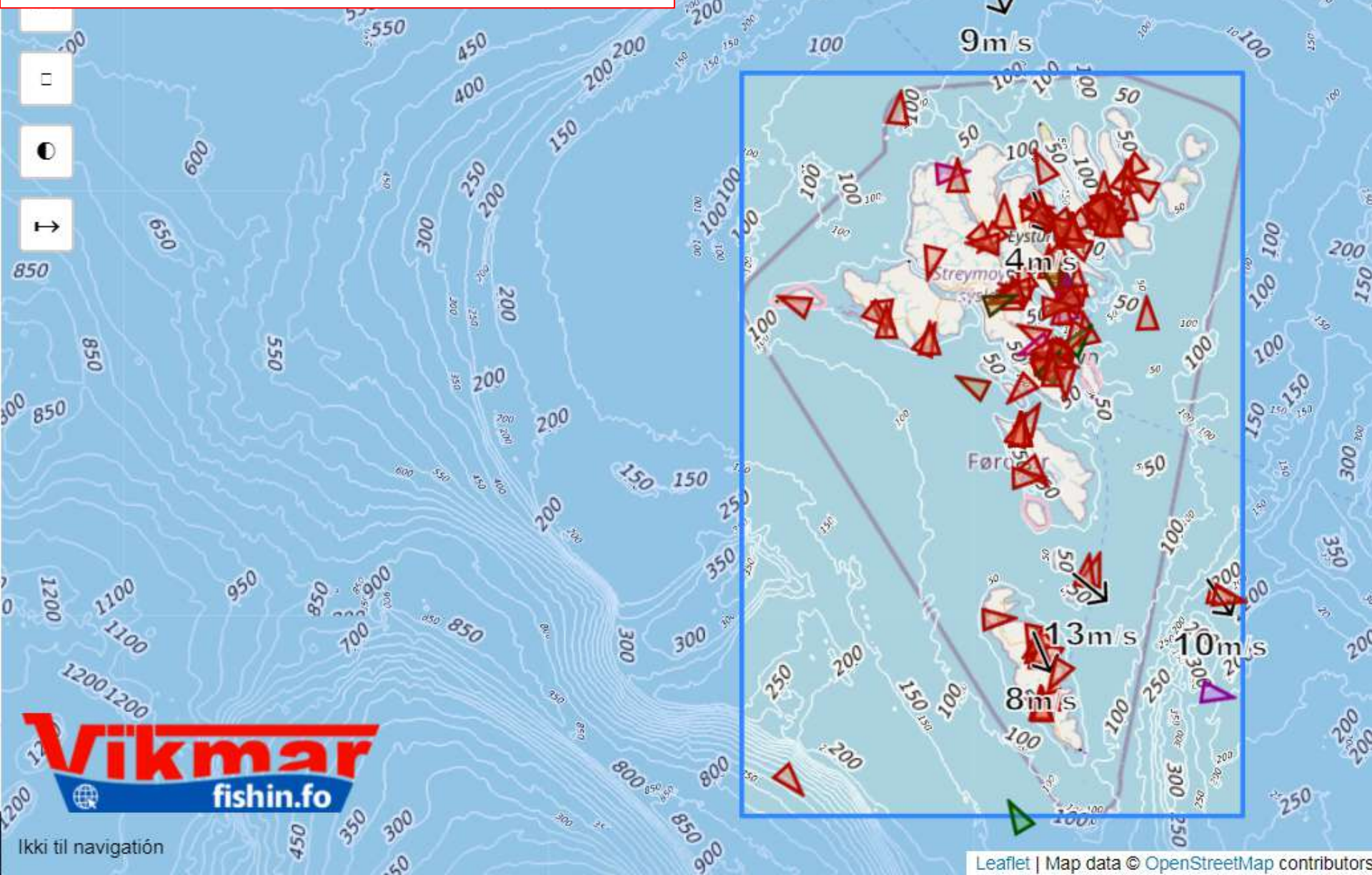


Samband millum fiskiskap og hita?

Hiti
(°C)



Vikmar hefur goymt data frá fleiri skipum, í fleiri ár

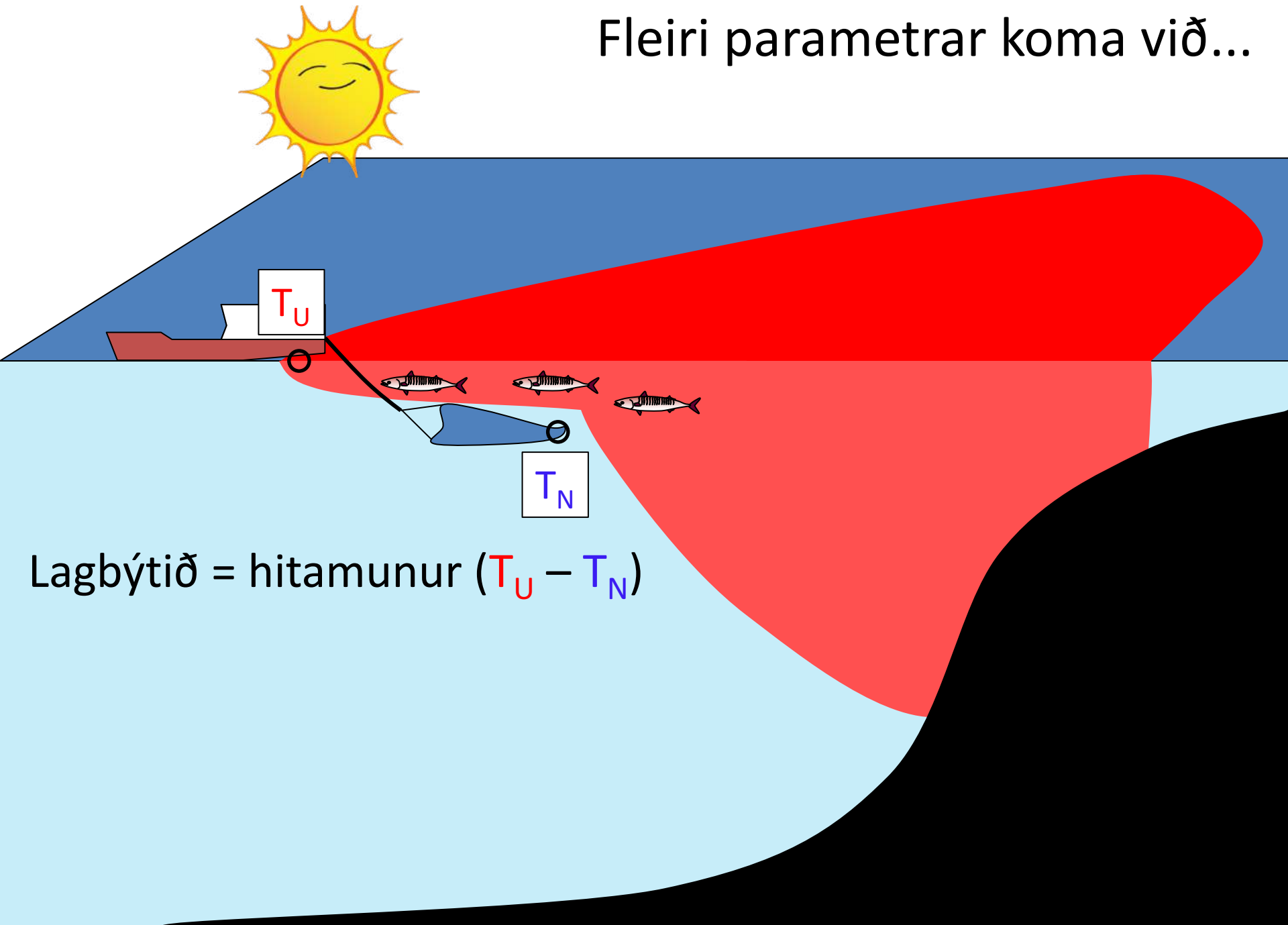


Vikmar
fishin.fo

Ikki til navigatión

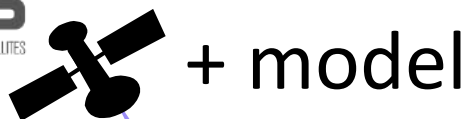
Leaflet | Map data © OpenStreetMap contributors

Fleiri parametrar koma við...



Lagbýtið = hitamunur ($T_U - T_N$)

EU umsókn (BIOCLASS) á heysti 2019



Vikmar

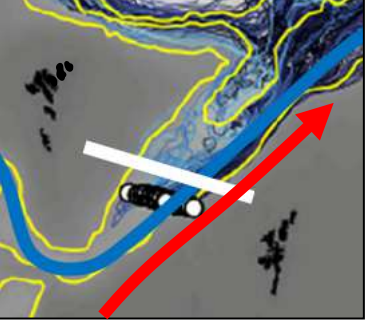


Mátibretti



- 1) At industrialiserað
- 2) At intergrera CATSAT biomassa modellir
- 3) Eitt eitt datasett til havvísindi

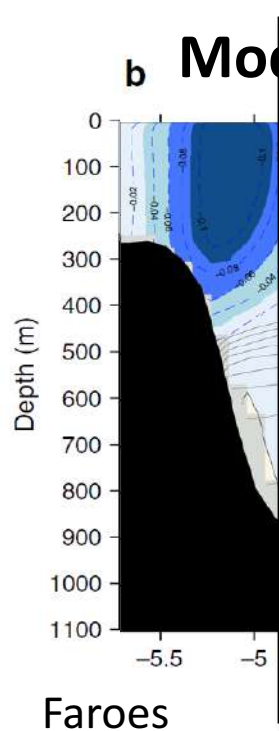
Tíanverri ikki fíggjað



Norröna hefur funnið nýggjan streym (Summar 2020)

Streymmátari (*Dopplari*)

M/F Norröna



nature
COMMUNICATIONS

ARTICLE

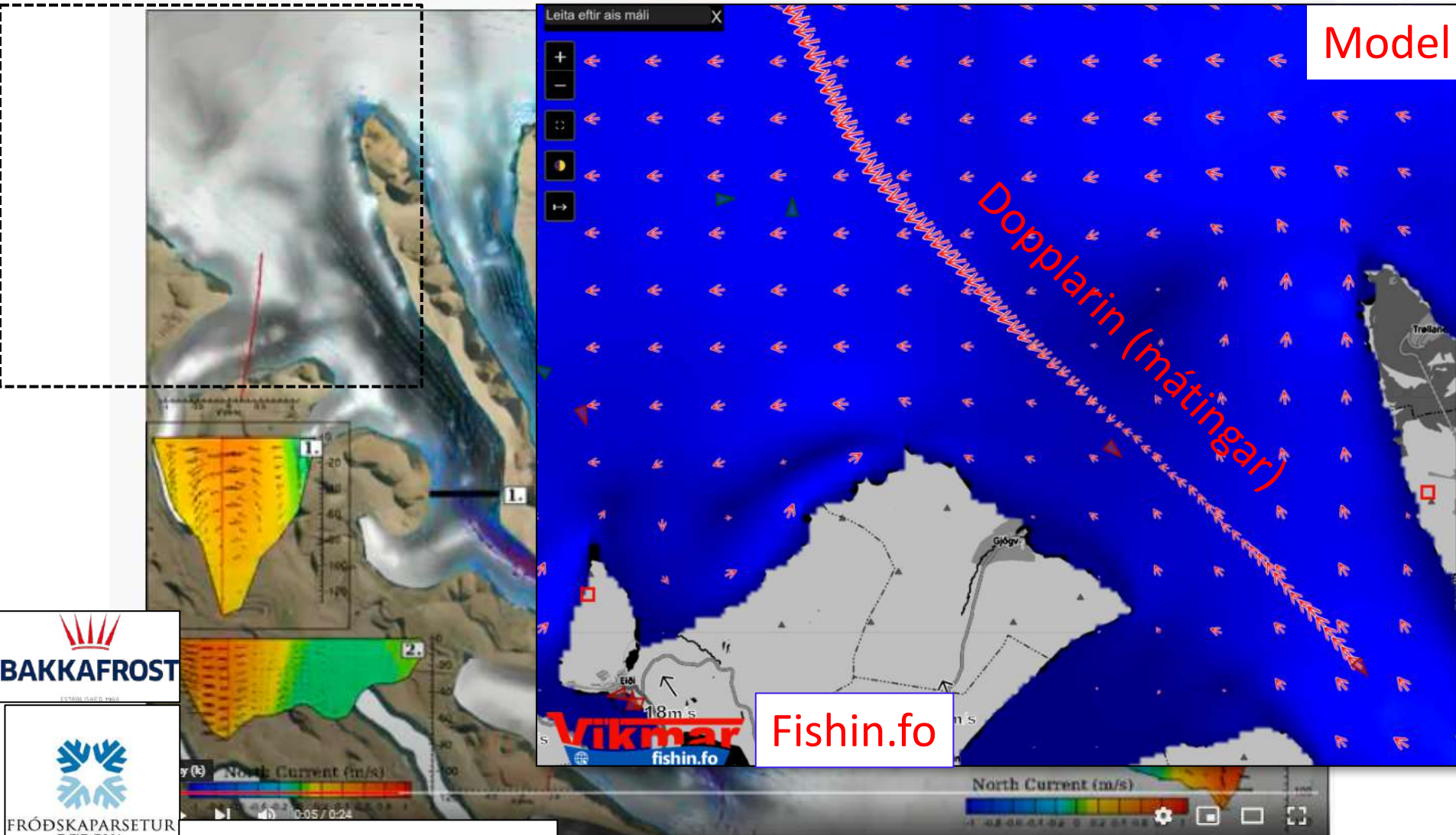
<https://doi.org/10.1038/s41467-020-17426-8> OPEN

Check for updates

Discovery of an unrecognized pathway carrying overflow waters toward the Faroe Bank Channel

Léon Chafik ¹, Hjalmar Hátún ², Joakim Kjellsson ^{3,4}, Karin Margretha H. Larsen ², Thomas Rossby ⁵ & Barbara Berx ⁶

Nýggj model og Dopplari á fiskiskipum



Model

Fishin.fo

BAKKAFROST

FRÓÐSKAPARSETUR
FØROYA

Model: Knud Simonsen

Hvat so?

Data Quality
(Signar Heinesen)

Nýggj instrumentir?

Dataformatir?

Standardir?

Kalibrering

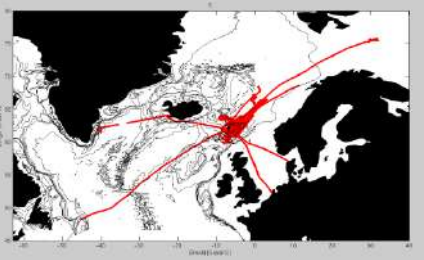
Data góðska?

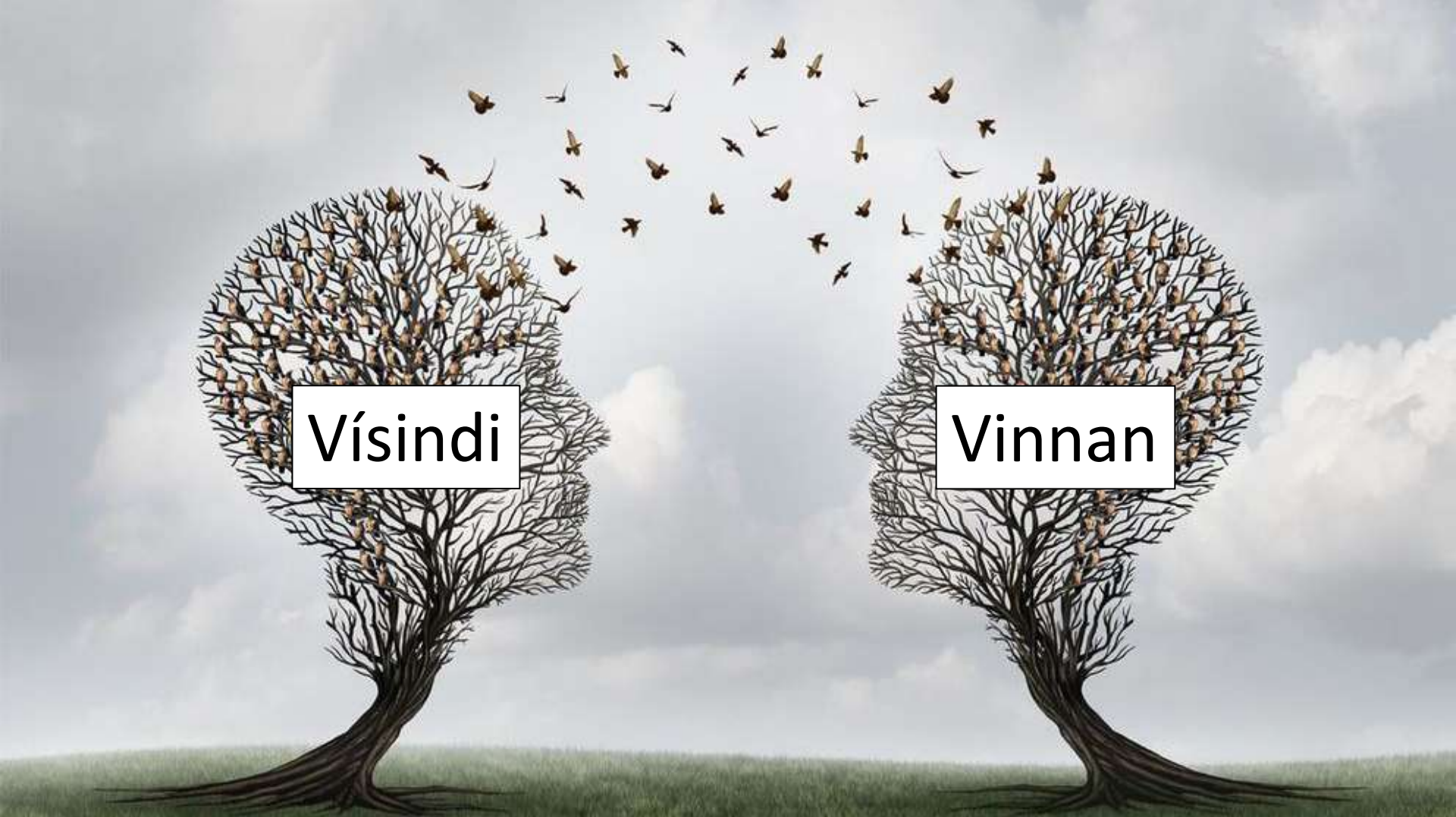
Hvat gera onnur?

Eksisterandi, men óbrúkt data?

Hvat er í hesum data-bunka?

Víkmar





Vísindi

Vinnan



sjókovin
blue resource



Ocean Cluster
Faroes

Tørvur hjá vinnuni

- **Í fiskiskapi**

- Hvørjir umhvørvisparametrar hava ávirkan á fiskaútbreiðslu?
- Kann slíkt styttu um leitingina?
- Hvør skipan er hin besta (mest nýttu)?
- Meira viðkomandi lýsing (views) av verandi data? Seta aðrar sensorar á trol/skip? Onnur hugskot...?

- **Søluparturin**

- Kunnu umrøddu data betra um álitið hjá fiskakeyparum (fiska reinari osv), og tískil økja prísir?

Áhugin hjá vinnuni

- **Er vinnan fús at:**

- Seta út/taka upp útgerð (t.d. Svívararar)
- Ansa eftir instrumentum sum ferðast í sjónum?
- Seta neyvari sensorar á trol/skip (t.d. lítla CTD)
- Lata fólk koma umborð at kalibrera útgerð (tá skipið liggur við kei)

Hevur hetta at stuðla gransking áhuga í sær sjálvum?

...